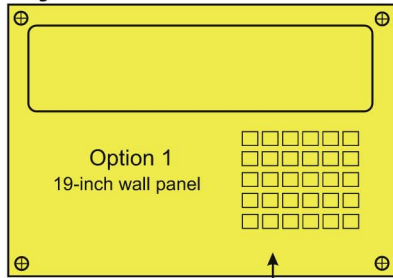


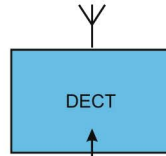
Systems Overview



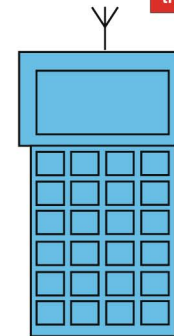
The wall panel works like a remote control but is installed in a 19-inch rack system. Dedicated keys allow for a direct selection of units, e.g. chain hoists.

The Positioning Control System was developed to perform fully automated or semi-automated positioning of monopoles in TV studios. It not only features the control of the vertical and horizontal movements of monopoles, but also full control of lighting fixture parameters like pan, tilt, focus, barndoors, and so on.

For redundancy purposes, a second Main Control Unit may be installed as a back-up system. Should the main system fail for any reason, work can be continued using the back-up system.



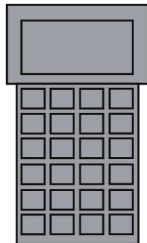
Option 2
Radio-remote control



The radio-remote control enables the user to control all motorized functions within the studio. Furthermore, it also displays the status messages, coming from the single control boxes. The radio-remote control uses DECT and thus features a range of approx. 100 m.

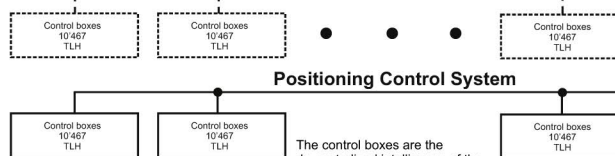
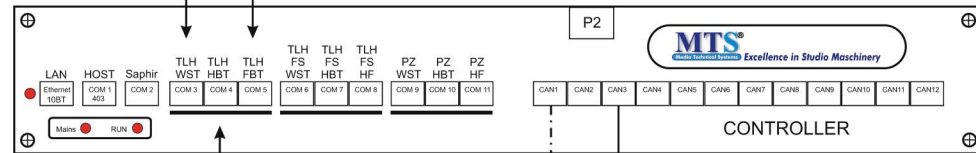
The Main Control Unit is the heart of the system. It processes user requirements and status information and handles all communication between the various parts of the system in real-time.

Option 3



On-wires
remote control

The on-wires remote control works exactly like the radio-remote control apart from that it needs a wire running to the Main Control Unit.



Positioning Control System

The control boxes are the de-centralized intelligence of the system. Dedicated to the control of one complete instrument with all its feature, they handle all commands and generate status messages for instant feed-back.

The system comprises of the following elements:
Main Control Unit (optionally with back-up system)
- 1 to 250 control boxes
- Control unit Posi-Control
- 1...6 remote controls
- 1...3 wall panels



MovieTech AG
Martin-Kollar-Str. 9 · 81829 München
Tel. +49/89-4368913 · Fax +49/89-43689155
e-mail: info@movietech.de · www.movietech.de